

# Poly Trio C60

This setup sheet covers the Poly Trio C60, Trio C60 ND, and Trio C60 NR.

See the Poly Trio C Series Regulatory Notices guide for all regulatory and safety guidance prior to configuration.

Avant de procéder à la configuration, veuillez consulter les Avis de réglementation du Poly Trio C60, afin de prendre connaissance des recommandations en matière de sécurité et de réglementation.

**CONTENTS**

LAN | Power  
7.6 m (25 ft)

**OPTIONAL**

Power  
1.8 m (6 ft)

Part Number  
2200-86680-XXX

LAN  
1.8 m - 2.1 m  
(6 ft - 7 ft)

Part Number  
2200-49007-001

USB Type-A - Micro-B  
1.22 m (4 ft)

Part Number  
2200-86430-001

Mic  
2.1 m (7 ft)

Part Number 2200-86430-001  
<https://www.poly.com/us/en/products/phones/accessories/expansion-microphone>

**MINIMUM SETUP**

Installation des éléments de base  
 Instalación necesaria  
 Instalação básica  
 Grundinstallation  
 Installazione necessaria  
 Nødvendig oppsett  
 Minimális beállítások  
 Konfiguracja minimalna  
 Необходимая настройка

**1**

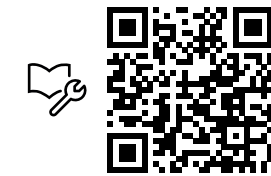
**2**

PoE | PoE+

**OPTIONAL**



1725-49141-003B



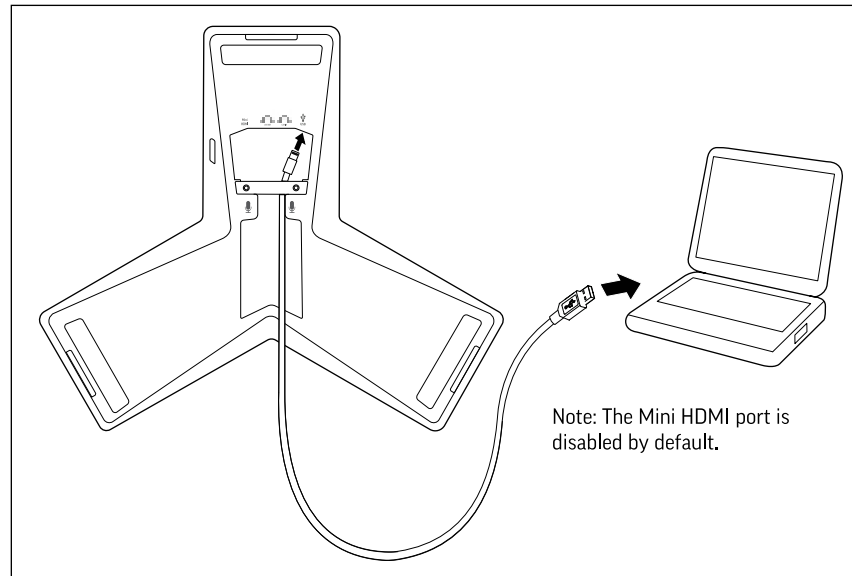
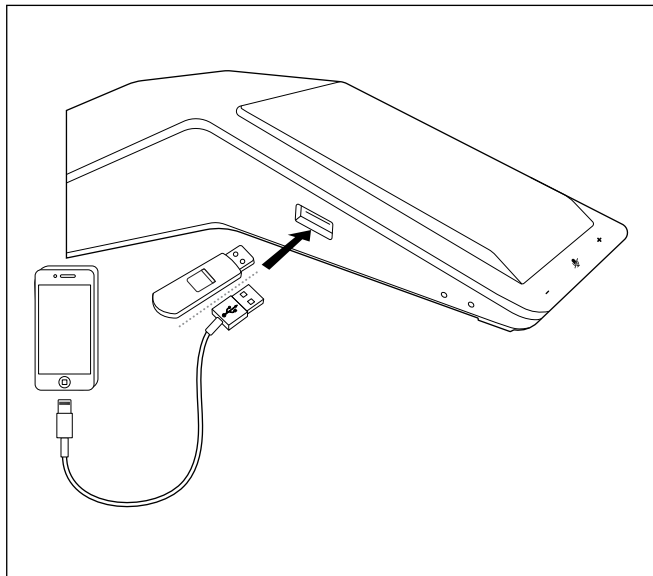
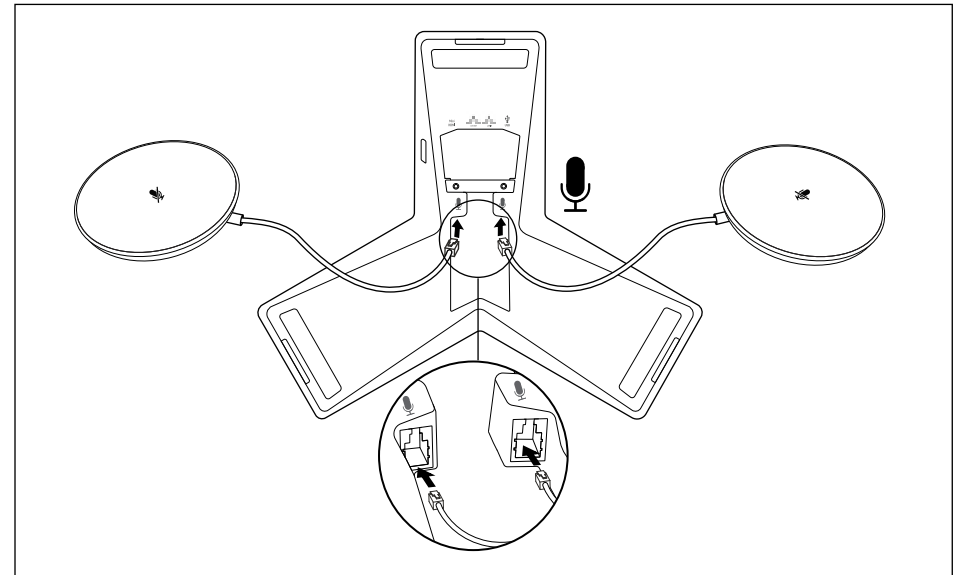
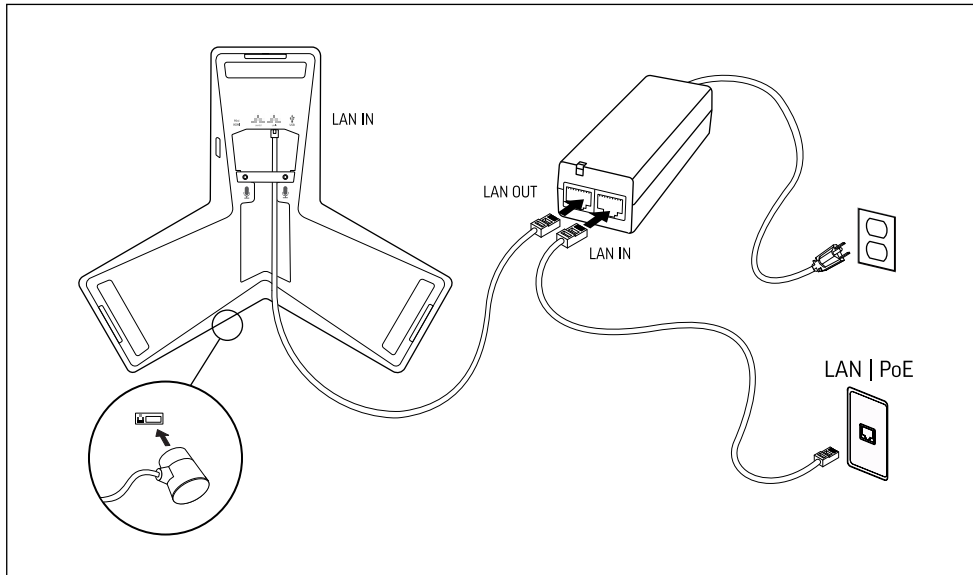
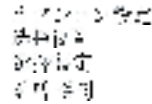
[poly.com/support/trio-c60](https://poly.com/support/trio-c60)

## OPTIONAL SETUP

Installation de l'équipement optionnel  
 Instalación del equipo optativo  
 Instalação do equipamento opcional

Einrichten der optionalen Ausrüstung  
 Installazione delle apparecchiature opzionali  
 Valgfritt oppsett

Kiegészítő beállítások  
 Konfiguracja opcjonalna  
 Дополнительная настройка



Hereby, Plantronics Limited (UK) declares that the radio equipment type as described in the accompanying documentation is in compliance with the relevant statutory requirements. A copy of the Declaration of Conformity to the essential requirements may be found at [www.poly.com/conformity](http://www.poly.com/conformity).

Poly Trio C60 system Radio Operating Frequency:  
 1880 - 1900MHz <250mW peak  
 2400 - 2483.5MHz - <20dBm EIRP  
 5180 - 5710MHz < 20dBm EIRP"

PoE output is compliant with IEEE 802.3af PSE standard and rated maximum output power of 15.4W